



BULLETIN 1

FOR ORIENTEERING COMPETITION RHODOPE CUP PRIZE STRAHIL PALANOV

Organizers

Bulgarian Orienteering Federation
Velingrad Municipality, Sarnitsa Municipality
SCO Three Hills Club

When and Where

From July 08 to July 12 (Wednesday to Sunday) 2026
The competition will be held in the vicinity of
city of Sarnitsa, Pazardzhik Region, Bulgaria

Program

July 8 Wednesday - Middle Distance

- 14:00 The secretary begins work at the final
- GPS - 42°01'59.9"N 24°01'12.6"E
- 16:00 Start - Velingrad Cup Day 1

July 9 Thursday - Middle Distance

- 11:00 Start - Velingrad Cup Day 2
- GPS - 41°49'39.0"N 23°52'49.6"E
- Awarding Ceremony for Velingrad Cup

July 10, Friday - Middle Distance

- 14:00 The secretary starts work at the final
- GPS - 41°49'39.0"N 23°52'49.6"E
- 15:30 Start - Cup Sarnitsa Day 1

July 11 Saturday - Long distance

10:30 Start - Cup Sarnitsa Day 2, GPS - 41°49'39.0"N 23°52'49.6"E

July 12 Sunday - Middle Distance

10:30 Start - Cup Sarnitsa, Day GPS - 41°49'39.0"N 23°52'49.6"E

12:30 Awarding for the Sarnitsa Cup

TECHNICAL CHARACTERISTIC AND LENGTHS

Velingrad Cup 1 day - July 8 Wednesday 2026

Area: Hodjovi Skali Map: Scale 1:7500 / H-5m.

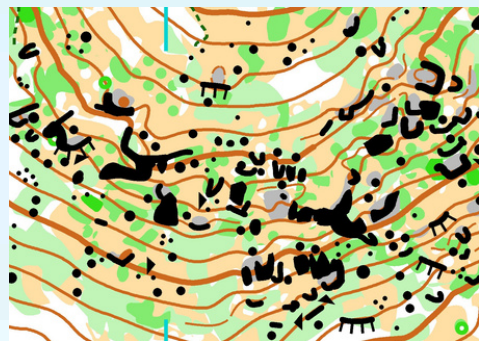
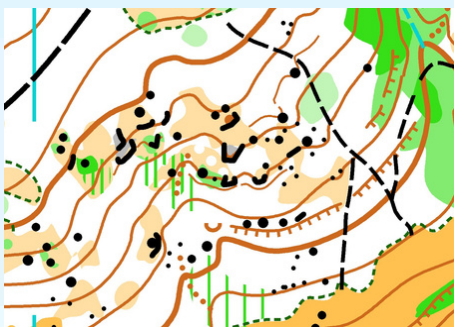
The map was created in 2022, updated in 2026 by Georgi Kartalov.

The maps are printed on waterproof paper. The description is on the front side of the map. There is also one at the start.

Relief: Moderately to strongly undulating terrain, rounded landforms with an elevation of 800 - 1000 m, with numerous microforms in places (ridges and valleys). At some places there are rocks and rocky formations.

Vegetation: Mixed forest - varying in all passability.

Road network: Moderately developed, paths and roads of all categories. Hydrography: Numerous small streams and ponds.



ADDITIONAL INFORMATION Day 1

final - Start 200 m. by white-red marking - 5 min

Last CP - Finish 50 m. Parking - Finish - 100-200 m.

Please park only in the designated places. Follow the instructions of the organizers. The start for 10-year, is the same!

Technical information – Velingrad Cup day 1

Classes	Length	CP	Climb	Classes	Length	CP	Climb
M12	1500	6	80	W12	1500	6	80
M14	2100	11	110	W14	1700	9	80
M16	2600	11	150	W16	2300	10	140
M18	2800	12	160	W18	2600	11	150
M20	3100	14	165	W20	2800	12	160
M21	3600	14	175	W21	3100	14	165
M35	3100	14	165	W35	2800	12	160
M40	3100	14	165	W40	2800	12	160
M45	2800	12	160	W45	2600	11	150
M50	2600	11	150	W50	2600	11	150
M55	2600	11	150	W55	2300	10	140
M60	2300	10	140	W60	2300	10	140
M65	2300	10	140	W65	2100	10	110
M70	2100	10	110	W70	1700	9	80
M75	1700	9	80	MW 10	450	3	5
Open 1	1700	8	85	Open 2	2100	10	110
ULTIMATE	3600	14	175				

TECHNICAL CHARACTERISTIC AND LENGTHS

Velingrad Cup Day 2 - July 9 Thursday 2026

Area: Pobit Kamak - South

Map: Scale 1:7500 / Elevation 5m. The map was made in 2026 by Georgi Kartalov. The maps are printed on waterproof paper. The description is on the front side of the map. There is also one at the start.

Relief: Moderately rugged terrain, rounded landforms with an elevation of 1200-1400 m, with many microforms in places (ridges and ravines).

Vegetation: Coniferous forest (spruce and white pine) varying in all passabilities.

Road network: Well developed, trails and roads of all categories.

Hydrography: An area rich in water bodies. A river flows through the area, which is 2-5 meters wide. Crossing it is done via a bridge.



ADDITIONAL INFORMATION

Finish – Start 1250 m. with white-red markings - 20 min

Last CT – Finish 50 m.

Parking - Finish - 0 m. Please park only in the designated areas.

Follow the instructions of the organizers.

The start for 10-year, is located at the Finish!

A road crosses, please move to the indicated location!

Technical information – Velingrad Cup day 2

Classes	Length	CP	Climb	Classes	Length	CP	Climb
M12	2200	10	70	W12	2200	10	70
M14	2800	12	105	W14	2600	11	85
M16	3000	15	125	W16	2800	12	105
M18	3300	17	135	W18	3000	15	125
M20	3800	18	155	W20	3300	17	135
M21	4300	19	165	W21	3800	18	155
M35	3800	18	155	W35	3300	17	135
M40	3800	18	155	W40	3300	17	135
M45	3300	17	135	W45	3000	15	125
M50	3000	15	125	W50	3000	15	125
M55	3000	15	125	W55	2800	12	105
M60	2800	12	105	W60	2600	11	85
M65	2800	12	105	W65	2600	11	85
M70	2600	11	85	W70	2300	10	65
M75	2300	10	65	MW 10	600	3	5
Open 1	2200	10	70	Open 2	2600	11	85
ULTIMATE	4300	19	165				

TECHNICAL CHARACTERISTIC AND LENGTHS

Sarnitsa Cup Day 1 - July 9, Friday 2026

Area: Gorni Zhabi - north

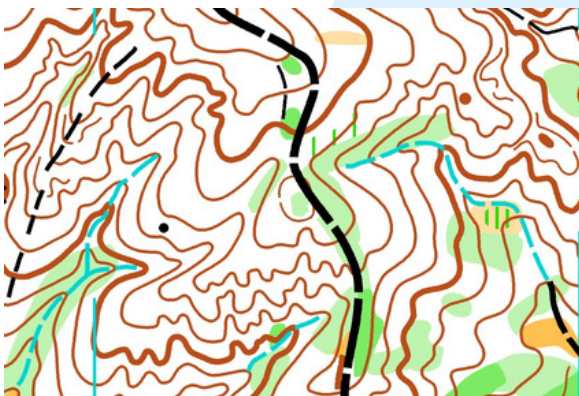
Map: Scale 1:7500 / H-5m. The map was made in 2026 by Georgi Kartalov. The maps are printed on waterproof paper. The description is on the front side of the map. There is also one at the start.

Relief: Moderately to strongly undulating terrain, rounded landforms with an altitude of 1200-1400 m, with numerous microforms (hills and ravines) in places.

Vegetation: Coniferous forest (spruce and white pine) varying in all passabilities.

Road network: Well developed, paths and roads of all categories.

Hydrography: An area poor in water bodies. A river runs through the area, which is 1-2 meters wide. It crosses everywhere!



ADDITIONAL INFORMATION

Finish - Start 650 m. on red and white markings - 10 min

Last KT - Finish 50 m

Parking - Finish - 0 m. Please park only in the designated areas.

Follow the instructions of the organizers.

The start for 10-year, is the same!

Technical information – Sarnica Cup day 1

Classes	Length	CP	Climb	Classes	Length	CP	Climb
M12	1900	9	40	*12	1900	9	40
M14	2300	11	110	*14	1900	11	100
M16	3200	12	190	*16	2800	12	180
M18	3500	14	195	*18	3200	12	190
M20	3700	14	195	*20	3500	14	195
M21	4100	18	200	*21	3700	14	195
M35	3700	14	195	*35	3500	14	195
M40	3700	14	195	*40	3200	12	190
M45	3500	14	195	*45	2800	12	180
M50	3200	12	190	*50	2800	12	180
M55	2800	12	180	*55	2300	11	110
M60	2800	12	180	*60	2300	11	110
M65	2330	11	110	*65	1900	12	100
M70	1900	12	100	*70	2900	12	100
M75	1900	12	100	M* 10	1000	4	15
Open 1	1900	9	40	Open 2	2300	11	110
ULTIMATE	4100	18	200				

TECHNICAL CHARACTERISTIC AND LENGTHS

Sarnitsa Cup Day 2 - July 11, Saturday 2026

Area: Pobit Kamak - Selishte

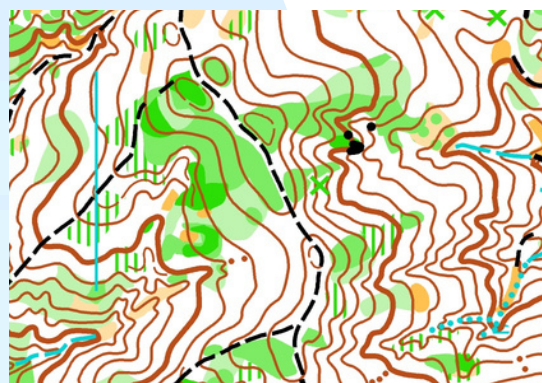
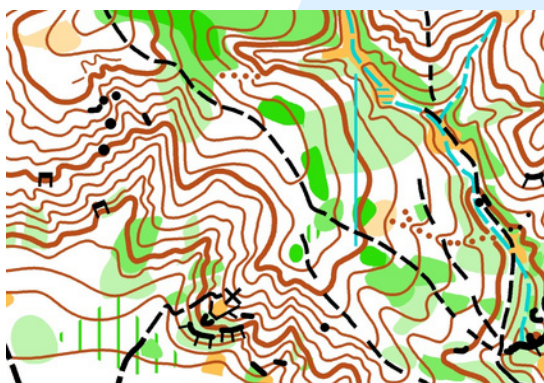
Map: Scale 1:15000, 10000 / H-5m. The map was made in 2025-26 by Georgi Kartalov. The maps are printed on waterproof paper. The description is on the front side of the map. There is also one at the start.

Relief: Moderately to strongly undulating terrain, rounded landforms with an altitude of 1200-1400 m, with numerous microforms (hills and ravines) in places.

Vegetation: Coniferous forest (spruce and white pine) varying in all passabilities.

Road network: Well developed, paths and roads of all categories.

Hydrography: An area poor in water bodies. A river runs through the area, which is 1-2 meters wide. It crosses everywhere!



ADDITIONAL INFORMATION

Finish – Start 1800 m. with white-red markings - 30 min

Last CT – Finish 50 m.

Parking - Finish - 0 m. Please park only in the designated areas.

Follow the instructions of the organizers.

The start for 10-year, is located at the Finish!

A road crosses, please move to the indicated location!

Technical information – Sarnica Cup day 2

Classes	Length	CP	Climb	Classes	Length	CP	Climb
M12	2900	12	30	W12	2900	12	30
M14	3600	9	230	W14	2700	9	160
M16	6100	14	320	W16	4300	11	280
M18	7000	17	350	W18	6100	14	320
M20	7700	20	435	W20	7000	17	350
M21	9700	23	485	W21	7700	20	435
M35	7700	20	435	W35	7000	17	350
M40	7000	17	350	W40	6100	14	320
M45	6100	14	320	W45	4300	11	280
M50	6100	14	320	W50	4300	11	280
M55	4300	11	280	W55	3600	9	230
M60	4300	11	280	W60	3600	9	230
M65	3600	9	230	W65	2700	10	160
M70	2700	10	160	W65	2700	10	160
M75	2700	10	160	MW 10	600	3	25
Open 1	2900	12	30	Open 2	2200	11	95
ULTIMATE	7000	17	350				

TECHNICAL CHARACTERISTIC AND LENGTHS

Sarnitsa Cup Day 3 - July 12, Sunday 2026

Area: Gorni Zhabi - south

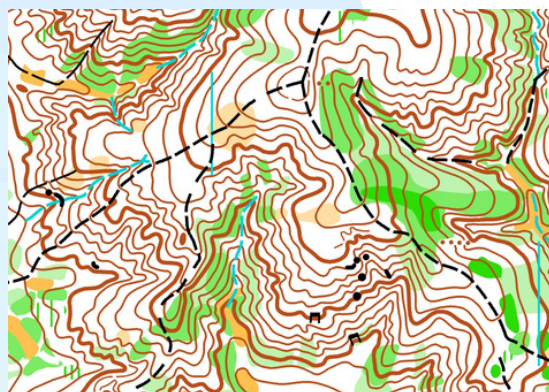
Map: Scale 1:7500 / H-5m. The map was made in 2026 by Georgi Kartalov. The maps are printed on waterproof paper. The description is on the front side of the map. There is also one at the start.

Relief: Moderately to strongly undulating terrain, rounded landforms with an altitude of 1200-1400 m, with numerous microforms (hills and ravines) in places.

Vegetation: Coniferous forest (spruce and white pine) varying in all passabilities.

Road network: Well developed, paths and roads of all categories.

Hydrography: An area poor in water bodies. A river runs through the area, which is 1-2 meters wide. It crosses everywhere!



ADDITIONAL INFORMATION Day 3

There is water 30 meters from the finish

final - Start 50 m. by white-red marking - 5 min

Last CP - Finish 50 m.

Parking - Finish - 0-50 m.

Please park only in the designated places. Follow the instructions of the organizers.

The start for 10-year, is located at the Finish!

Technical information – Sarnica Cup day 3

Classes	Length	CP	Climb	Classes	Length	CP	Climb
M12	1600	10	25	W12	1600	10	25
M14	2500	14	90	W14	2300	15	65
M16	2800	18	110	W16	2500	14	90
M18	3000	16	135	W18	2800	18	110
M20	3200	18	130	W20	3000	16	135
M21	3600	19	150	W21	3200	18	135
M35	3200	18	135	W35	3000	16	135
M40	3000	16	135	W40	2800	18	110
M45	3000	16	135	W45	2500	14	90
M50	2800	18	110	W50	2500	14	90
M55	2800	18	110	W55	2300	15	65
M60	2500	14	90	W60	2300	15	65
M65	2300	15	65	W65	2000	14	45
M70	2000	14	45	W70	2000	14	45
M75	2200	14	45	MW 10	500	4	25
Open 1	1600	10	25	Open 2	2300	15	65
ULTIMATE	3600	19	150				

Payment

Here is the bank account where you can transfer your entry fees.

ACCOUNT OWNER:

SCO TRITE HULMA BANK:

Allianz Bank Bulgaria

BANK OFFICE: Veliko Tarnovo

IBAN: BG45BUIN95611000669741

BIC: BUINBGSF

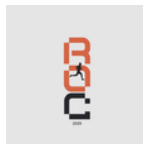
EXPECT BULLETIN 2, WITH A DETAILED INTERACTIVE MAP, AS WELL AS DETAILED SCHEMES OF THE START FINALS FOR EACH DAY. CAMPING IS POSSIBLE IN THE AREA OF FORESTRY [Selishte](#) , WITH ACCESS TO WATER AND TOILET, AND MEALS PROVIDED IN THE FORESTRY CANTEEN.

CAMPING IS ALSO POSSIBLE AT THE FINALS FOR DAY 2, 3, AND 4, WHICH IS THE SAME - THERE IS NO WATER AND TOILETS.

<https://www.facebook.com/threehillsclub>

Can't wait to see you in Sarnica end Velingrd - SPA capital of Bulgaria for 5 amazing orienteering days!

MAP



Number One
ADVERTISING



SIVEN

WELCOME